

VISIT  
THE  
MALL!

CLICK HERE!



PHR DIRECTOR:

Jan Jorolan  
Donna Moore  
James Watson

ADVISORY BOARD:

Francesca Alfino  
Rita Charvat  
Linda Fleisch  
Bob Foulk  
Jim Parrott  
JR Wythe

BOARD LIAISON:  
VACANCY



An outreach e-communication from Papillon Haven Rescue

SHOPPING OPPORTUNITIES



BECOME A VIRTUAL FOSTER!

Click here to see how you can make a difference in a rescued Pap's life!

DON'T FORGET - MAKE DONATIONS THRU PAYPAL

<https://www.paypal.com/cgi-bin/webscr>  
Remember - all donations are tax deductible!



SAVE A DOG!

(iGive has over 560 stores to shop from. Enter the site as a Pap Haven supporter and PHR gets a percentage in return)

[WWW.IGIVE.COM](http://WWW.IGIVE.COM)

NEWSLETTER  
SUBSCRIPTION

CONTACT PAP  
HAVEN

PHR LENDING LIBRARY:  
<http://butterflyboulevard.pbwiki.com/>



HELP PAPHAVEN RESCUE EVERY TIME YOU SEARCH.

IT'S THAT EASY!

(Remember: you must be logged in to iGive before you begin your search!)

iSearchiGive™

Join us to celebrate



## The Westminster Kennel Club Dog Show!

For this special event, our PapHaven free gift to you for supporting our organization with your purchase will be an automatic entry into our own annual Westminster Games!

Established in 1877, The Westminster Kennel Club is America's oldest organization dedicated to the sport of purebred dogs. It persists as the second longest continuously-held sporting event in this country, just one year behind the Kentucky Derby. **Westminster is known as America's Dog Show!**

### To celebrate, PHR is holding its 5th annual Westminster Games!

**How it works:** With each purchase of a bumper sticker, you will receive a random group of 5 dog breeds. If one of the breeds you hold wins a Group One level competition, you will be included with other winners to receive a Group One level prize.

If your breed takes a Best in Show you will be entered into the group of other Best in Show Winners for the Grand Prize.

Purchase your Bumper Stickers HERE!  
one (1) for \$10; three (3) for \$25 (purchase tickets at  
<http://paphavenwestminster.homestead.com/index.html>)



Then just watch the Show!!!!  
If you are a lucky winner the postage is also included!!

**\*\*PLEASE NOTE!!!!!!\*\*** - This Fundraiser is open to persons in the continental U.S. only. A purchase of one or more blocks is considered a commitment to donate that amount. *This Fundraiser begins at 8 AM Sunday, Jan. 17, 2010 and closes at midnight on February 14. The 134<sup>th</sup> Westminster Kennel Club Dog shows live-coverage begins Monday, February 15 8/7C on USA Network!*

Your donations are what makes it possible for us to help Papillons in need find their own Forever Home!

Click below to view all the terrific prizes that have been donated.



Visit the **GRAND** prize page!

Visit the Group One prize page!

# PAPHAVEN @ NATIONALS 2010

**P**HR will have a presence at Nationals in a bigger way this year than ever before! And we hope all of you can attend! At this time, we plan to have a “booth.” We will be collecting items to sell – donut beds, belly bands, etc. Please contact Jan at [jorolan@catc.net](mailto:jorolan@catc.net), if you can provide items for us to sell.

Also, we are looking for members/helpers to help man the booth. If you plan to attend, please contact Nora at [norajl169@yahoo.com](mailto:norajl169@yahoo.com). She will be keeping a running list of names, cell phone numbers, and booth times. We are trying to keep everyone’s schedules in consideration – who’s participating in agility trials, etc., so everyone can participate and help out as well. **HOPE YOU CAN JOIN US!**

## THE NATIONAL SPECIALITY IS COMING TO DESMOINES, IOWA



**A**re you planning to join the party? Papillon Haven is having a booth (workers needed); and other ideas are still in the planning stages. Here is the schedule from PCA (subject to change). Hope to see you there!

### 2010 NATIONAL SPECIALITY DES MOINES, IOWA MAY 3-8, 2010

#### MONDAY, MAY 3RD

9 am – Papillon only Agility (off site)  
Jester Park Equestrian Center  
Lunch will be available

#### TUESDAY, MAY 4TH

8 am – Vendor set up (until 5 pm)  
9 am – Papillon only Agility (off site)  
Jester Park Equestrian Center  
Lunch will be available for purchase at Equestrian Center  
12 pm – PCA Regional - Conformation only  
7 pm – Welcome Dessert & Coffee  
(No charge)

#### WEDNESDAY, MAY 5TH

8 am – Obedience & Rally in the Ballroom  
8:30 am – Open Board Meeting  
9:30 am – Round Table Discussion with Independent Pap Clubs  
11 am – Awards Lunch Gathering - “The Way We Were” slide presentation (Cost \$20)

3 pm – Puppy & Veteran Sweepstakes w/dinner break at the judges’ discretion

#### THURSDAY, MAY 6TH

8 am – Conformation Dogs w/lunch break at the judges’ discretion  
4 pm – Papillon Genetic Seminar  
Presenter: Dr. Jerold S. Bell DVM  
Cost: \$25 covers expenses  
5 pm – Pap Star  
7:30 pm – Top 20 Competition

#### FRIDAY, MAY 7TH

8 am – Conformation Bitches w/ lunch break at the judges’ discretion  
4 pm – Judges’ Education Seminar  
Presenter: Joanne (Jan) Paulk  
Cost: Free – Open to everyone  
5 pm – Phalene Fanciers Awards & Recognition Dinner  
5 pm – Junior’s Pizza Party & Trivia  
5:30 p.m. – Judges’ Education Hands-on Workshop  
Presenter: Joanne (Jan) Paulk  
Cost: Free – Judges only  
7:30 pm – Annual General Meeting  
– announcement of silent auction winners at the close of AGM

#### SATURDAY, MAY 8TH

9 am – **Rescue Parade**  
10 am – Parade of Title Holders  
11 am – Lunch Break  
12 pm – Junior Showmanship  
Veteran Dog  
Veteran Bitch  
Conformation Intersex and Non-regular  
7 pm – Champagne Celebration for the Winners & Announcement of Top 20 Winner (No charge)

## RESCUE PARADE

**M**any of us, I know, are thinking about snow and winter, but now it’s time to start thinking about Spring and the Rescue Parade at the 2010 Papillon Club of America, (PCA) National Specialty. PCA needs a preliminary count in order to begin preparations for the goodie bags. Also they are seeking donations of goodies to go into those bags!

For new people, PCA has a tradition of dedicating the show ring to our wonderful second-chance furbabies at the National. These are Papillons that lost their homes, or in some cases never had a home, and were rescued and adopted by wonderful families and given a second chance for a happy life. This year’s event will take place:

### The Rescue Parade

Saturday, May 8, 2010 @ 9 AM  
Held at the Host Hotel – Holiday Inn  
Des Moines-Airport/Conference Ctr.

For information about the National, please click on: [http://www.papillonclub.org/2010\\_Specialty/index.htm](http://www.papillonclub.org/2010_Specialty/index.htm)

If you are planning on attending, Ellen Stuban (Parade Coordinator) needs two things from each of you.

1. Please send me an email with your contact information and the name of your Pap and your plans to attend.
2. You need to write a short biography about your Pap. These bios will be assembled into a booklet and read out loud as our furkids are walked around the show ring in their special moment. The bio needs to be no more than 3/4 page long and in 16 pt (large) font. Also provide a picture of your Pap, as well. Ellen has bios from previous years that she is willing to share (as samples) if needed. PCA needs the preliminary count by Friday, March 20th and the final bios are due Friday, April 17th.

Ellen needs to hear from you soon with the name of your participant. It’s always easier to cancel than to add, so if you are thinking about coming and want your rescued Pap to be entered, please her know ASAP. Of course, if you have any further questions, please contact Ellen at [estuban01@comcast.net](mailto:estuban01@comcast.net)



PLEASE SEND THIS TO ALL YOUR PAPILLON-FRIENDLY  
FRIENDS WHO LIKE PAMPERED CHEF!



## VESTA STEINFELD HAS TEAMED UP WITH THE PAMPERED CHEF FOR AN ONLINE FUNDRAISER! ALL PROCEEDS GO TO: PAPHAVEN RESCUE

Go to <http://www.pamperedchef.biz/BSH> - JAN 31 – FEB 15

You will find the entire catalog there, PLUS the OUTLET store – great buys! Order directly

from the website.

UNGLAZED STONES are on sale @ 20% off \*– unlimited quantities! (A great time to purchase gifts for the chefs you know!) **\*Order Feb 1 – 15th for the discount\***

At check out, go to OPTION 1 and type in “PAPHAVEN.” Make sure you do DIRECT SHIPPING – your order will be sent directly to you!

Questions about the products? Contact Beth Hudson (PC consultant and sister-in-law to Vesta) at 603-759-3935 OR [bhudson59@myfairpoint.net](mailto:bhudson59@myfairpoint.net)

PAPHAVEN IS DOING SOME WONDERFUL THINGS FOR ABANDONED AND PUPPY MILL PAPILLONS

# facebook

Join other PHR members on this exciting site! Network, share ideas, chat that are OT (off-topic) on the PapHaven group's site.

We have arrived! You now can find us on Facebook. Please feel free to join us and help spread the word.

This is a great place to share pictures and stories.

Also, join the **Facebook – Papillon Haven Rescue** (PapHaven) page. Or refer your friends and family to this page ... great way for them to get their 'feet wet' to the fundraising and ideas of PHR! Our e-news, fundraising, and general information are up-to-date for anyone who wants to get a better idea about what we do!

If you have items to post and would like us to do it for you, please contact Rita Charvat ([rcharvat@ford.com](mailto:rcharvat@ford.com)).

If you are already a member of Facebook, look us up! We will be using Facebook and Twitter to post future events and discussions.



AUCTION MAY BE OVER, BUT PREP NEVER ENDS ...

## WE NEED YOUR HELP!

Do you have a closet full of gifts that you received that you can't (or won't) use??? Would you be willing to donate them to PapHaven? **Good, NEW, unused gifts** can be donated to auction / fundraising committee for the **Auction!** Also, the newest addition to our fundraising efforts, **MissionFish**, is ALWAYS looking for donations.

Jim Parrott writes, *“eBay/Mission Fish is up and running. But, sadly we have only a few items for sale. We need more items! If you have items to sell, please contact me. You may have items that can't go in the auction but may be useful for eBay. They don't have to be dog-related. Every penny we sell goes to PapHaven! New items that you can't re-gift, collectibles, etc. Look around and see what you can find. You may know a local vendor with items to donate. These can be turned into cash.”*

**Come on everyone!** Tap all your sources ... local crafters, wood-workshops, etc. Do you know someone who paints



(water-color or oil), or does great photography, etc.? Would they donate a piece of their work to us? Antique jewelry that you no longer wear? Think about it ...

If you have something you think would be a good donation, please take a picture and email it and the info / dimensions of the item to [jmrasch@charter.net](mailto:jmrasch@charter.net) and [paphaven@gmail.com](mailto:paphaven@gmail.com). Jan Rasch or Jim Parrot will be able to tell you if the items can be used and what the next step is.

**Don't delay!** Prep for the Auction is a year-round event! If you are out-&-about and see something you think is unique, would you be willing to pick it up and send it along to the Auction? Crafters, get your art / sewing / needlecraft supplies ready! And **MissionFish** needs donations NOW!

## HIGH BLOOD PRESSURE IN OUR PETS

**H**igh blood pressure (also called systemic hypertension) is an extremely important concern in human medicine. High stress lifestyle, high salt diet, and smoking all contribute to this potentially dangerous condition and virtually everyone in the U.S. knows how serious it can be. **But what about our pets?** They don't smoke or worry about the mortgage and they don't deposit cholesterol in their blood vessels. They do, however, get high blood pressure (HBP) especially in age, and here is what you need to know.

### WHAT DOES HIGH BP DO?

Problems from HBP arise when a blood vessel gets too small for the high pressure flow going through it. Imagine attaching a garden hose to a fire hydrant. The pressure would cause the garden hose to explode and that is what happens to a blood vessel too small for the pressure going through it. Instead of water going everywhere, as in the garden hose analogy, bleeding results. Since affected vessels are small, the bleeding may not be noticeable but a lot of little bleeds and a lot of blood vessel destruction can create big problems over time.

The retina of the eye is especially at risk, with blindness (either sudden or gradual) often being the first sign of latent HBP. The kidneys are also a target as it relies on tiny vessels to filter toxins from the bloodstream. Kidney disease is an important cause of HBP and also progresses far more rapidly in the presence of HBP.

HBP increases the risk of "embolism:" the formation of tiny blood clots that form when blood flow is abnormal. These clots can lodge in an assortment of inopportune locations including the brain.

### WHAT CAUSES HIGH BP IN PETS?

There are numerous diseases in pets that are associated with HBP:

- **Chronic Renal Failure** – In one study, 93 percent of dogs with chronic renal failure and 61 percent of cats with chronic renal failure also had systemic hypertension.
- **Glomerular Disease** (a disease of the kidney filtration system) – Whereby protein is lost in urine. It is important to screen pets with HBP for urinary pro-

tein as control of protein loss is important to survival time.

- **Diabetes Mellitus** (inability to properly reduce blood sugar)
- **Cushing's Disease** (an adrenal cortisone excess)
- **Acromegaly** (growth hormone excess)
- **Polycythemia** (an excess in red blood cells)
- **Pheochromocytoma** (an adrenaline secreting tumor of the adrenal gland)

In humans, HBP is frequently considered "primary" meaning there is no underlying disease causing it. In animals, primary hypertension is unusual; there is usually another disease causing it and if routine screening does not identify the problem, more tests may be in order.

### HOW IS HIGH BP IDENTIFIED?

In human medicine, HBP is called "the silent killer" because most people have no reason to think they might be hypertensive. To find HBP in people, we screen for it. This means that virtually any time you see a doctor of any kind, a nurse will take your blood pressure. Similarly, in pets, a great deal of HBP is identified by screening for it. If a pet has one of the above disease conditions, blood pressure is generally checked. It has recently been recommended that older pets have their blood pressure checked whenever they have a physical examination. If you own a pet over age nine, be sure to ask for a blood pressure check if one has not been recommended to you.

The other time HBP is discovered is when it makes its presence known. This usually means some degree of blindness or some other obvious eye problem. The retina of a hypertensive patient develops tortuous looking retinal blood vessels. Some vessels may have broken showing smudges of blood on the retinal surface. Some areas of the retina simply detach. Sometimes the entire retina detaches. With early identi-

fication, some vision may be restored. **Do not let minor vision changes go unreported.** Let your vet know if you think your pet's vision is not normal.

Retinal changes can be complicated to interpret. Do not be alarmed if your vet recommends referral to a veterinary ophthalmologist.

### HOW TO MEASURE BP IN PETS

Blood pressure measurement is performed similarly to the way it is in humans. An inflatable cuff is fit snugly around the foot or foreleg of the pet. Sometimes the base of the tail can be used. The cuff is inflated so as to occlude blood flow through the superficial artery. In a person, as the cuff is slowly deflated a stethoscope is used to listen for the point when the blood pressure is adequate to pump through the partially occluded vessel. This point on the pressure gauge is the "systolic" blood pressure. The cuff is further deflated until the vessel is open and no more sounds are made. This point represents the "diastolic" blood pressure.

In animals, the stethoscope is just not sensitive enough and an ultrasonic probe must be taped or held over the artery. Using ultrasound, the sound of the systolic pressure is converted into an audible signal. It is not possible to measure diastolic pressure in a pet without actually placing a catheter inside an artery so we make do with just a systolic measurement. In pets, this measurement should not exceed 160. A reading of 180 is considered to indicate high risk for organ damage.

Some pets (obviously) are nervous at the vet's office and this factor must be taken into account when reading blood pressure. It is possible for a pet to have HBP at the vet's office and normal pressure at all other times. One might think this would be a common situation but most pets are able to maintain normal blood pressure despite being surrounded by hospital staff. To account for the "White Coat Effect," at least 5 measurements are taken so that the

(continued on pg. 7)



The Doppler Blood Pressure Monitor

## 'WE'RE ALL EARS!'

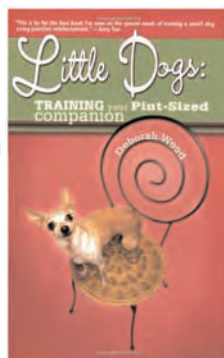
LITTLE DOGS: TRAINING YOUR PINT-SIZED COMPANION

by Deborah Wood

As a small dog owner, you have probably come to realize that little dogs have special needs that require training techniques specifically formulated for their small statures and distinctive personalities. *Little Dogs: Training Your Pint-Sized Companion* offers gentle, positive, and extraordinarily effective solutions to many of the most common challenges facing small dogs and their owners today.

### LITTLE DOGS FEATURES:

- Innovative training techniques geared specifically toward small dogs (12" and under or 20 lbs and under)
- Tips on how to clearly communicate with your dog



- Solutions to common behavioral issues
- Thorough coverage of a variety of issues with an emphasis on positive reinforcement

Understanding how your small dog thinks is key to establishing an affirmative relationship with him. *Little Dogs: Training Your Pint-Sized Companion* contains all of the information essential to the training success of both you and your little dog!

## BP AND YOUR PETS (continued from pg. 6)

pet becomes accustomed to the process and understands that no pain is involved.

### WHAT TREATMENT IS AVAILABLE FOR HYPERTENSION?

When ocular disease is present, special eye drops may be required depending on how much bleeding is present and whether or not return of vision is likely. (Here is one area where an ophthalmology specialist may be able to help.)

When hypertension is identified, a search for the underlying cause is indicated. Often controlling the underlying disease totally reverses the hypertension.

Beyond these methods, as with people, medication to actually lower blood pressure is often in order. This typically involves some type of pill that dilates peripheral blood vessels, effectively making them larger so as to accommodate the HBP flow going through them.

**Enalapril**, an angiotensin converting enzyme inhibitor, is the usual first choice for dogs. It is typically given once or twice daily.

Some of these medications are very small in pill form. So vets will recommend that the owner buy a pill cutter for more accurate dosing. Another option is a Compounding Pharmacy which may be used to create accurately-sized capsules or even a flavored liquid.

**Salt restriction in the diet is controversial;** it seems to make sense but there is not enough data at present to whole-heartedly recommend it. Certainly, if there is kidney disease present the recommendation is less equivocal as these low salt diets are designed with other features more specifically for kidney disease. This generally means a dry or canned formula prescription diet if the pet will eat it or a diet limited to dry food if the pet will not accept prescription food. Appropriate home cooked diets may be designed with the help of a veterinary nutritionist such as Dr. Rebecca Remillard at [www.petdiets.com](http://www.petdiets.com)

Hypertensive pets should be checked every two to four months to keep their blood pressure in a healthy range.



IN THE BAKERY WINDOW ...

## THANK YOUR DOG CASSEROLE

by Rachael Ray

Always check with your vet about which foods are appropriate for you to share with your pet.

- 1 Serving (for large dog)
- Cook 10 min

### INGREDIENTS:

- 1 tablespoon extra-virgin olive oil (EVOO)
- 1/4 pound ground turkey
- 1 small carrot, chopped or grated
- 1/4 cup green peas
- 1 cup unseasoned stuffing bread cubes
- 1/2 tablespoon butter
- 1/2 tablespoon flour
- 2 cups turkey or chicken stock

**Waste not:** For smaller dogs, divide leftovers into single servings and freeze for later.

### DIRECTIONS:

In a medium skillet, heat the EVOO, 1 turn of the pan, over medium heat. Add turkey and cook until light brown, about 2 minutes. Add chopped carrot and cook for 5 minutes. Add peas and lower the heat to low. Stir in bread cubes and remove from heat.

In a small skillet, melt the butter over medium heat. Whisk in flour, then add 1 cup turkey stock and cook, whisking constantly, until the gravy thickens, about 3 minutes. Remove from heat.

Soften the stuffing with the remaining 1 cup stock. Place in a bowl for your pup and let cool for about 5 minutes. Top with gravy and let cool for another minute before serving.



## SMALL DOG SYNDROME

by Sharon Maguire @ <http://www.dogbreedinfo.com> – ©Dog Breed Info Center – ® All Rights Reserved

**A**re you one of those people who prefer larger dogs? Do you know someone who has told you that they prefer larger dogs because small dogs are yappy and snappy? Whether we are a large dog-person or a small dog-person, one thing we all would agree on, is the larger percentage of small dogs tend to have a different type of temperament than medium and large dogs. Small dogs have earned the reputation of being jealous, yappy, snappy, protective, wary of strangers, and not

for the animal to be happy and balanced. **Let's take a closer look at how we treat large and medium dogs, as opposed to how we treat small and toy dogs.**

Many behaviors we humans do not allow large dogs to get away with we find cute in small dogs. **For example:**

### JUMPING

If an 80-pound German Shepherd (GSD) jumps up on a human, everyone agrees that this behavior needs to be corrected. Everyone sees this as a problem and the owners would seek help from a trainer, and/or read up on it on the Internet to remedy the behavior. At the very least, the dog would be locked in a separate room when guests arrived to protect these people from getting hurt.

Now picture a little 8-pound Miniature Pinscher jumping up on a human. You look down and I'll be darned, it's kind of cute. It does not hurt and people think "the

dog likes me!"

But what does it really mean? If dogs were human this would be true ... but they are not. Jumping has a totally different meaning to a dog than it does a human. It's a dominancy and respect issue. For a dog, space is a sign of respect and when you allow your little dog to jump on a human you are allowing them to disrespect a human. You are allowing them to display pack leader behaviors.

### GROWLING

If a GSD were to growl at your guest, you and your guest both know there is a problem. Something needs to be done. However, if that tiny 6-pound Chihuahua growls, well it's just what he does. He's a Chihuahua, right? Wrong... There is no difference, in a dog's mind, for a GSD to be growling at a human than there is for a Chihuahua. It's just another behavior we humans let those tiny dogs get away with.

### OTHER DOGS

If your little 5-pound Yorkshire Terrier decides to bark and growl at another dog while you are walking down the street, or as another dog passes by your house, it's almost seen as cute, because you see it as your tiny dog thinking they are a big dog. However, if your 120-pound Akita barks and growls at another dog, the dog is more likely to be put in their place and told to stop. The fact is, dogs should never be allowed to display dominant behaviors. Whether it be a huge or tiny dog, their pack leaders (humans) should tell the dogs "NO" and follow through until the dog understands this is not an acceptable behavior. And for the record, dogs do not "think" they are either big or little. They live in the moment and are just what they are, reacting to the moment. To dogs, size means nothing.

### SPACE

If you were eating dinner or working at your computer and your 70-pound Boxer comes running over and jumps up on your lap, chances are you would knock them back down telling them "No, not now, I am busy." However, if that 5-pound Maltese jumps up on your lap, well it's just cute. He loves you and just wants to be on you. There's that space issue again. Pack leaders decide when and where to do things. The pack leader belongs on top. It is ok for your little lap dog to sit on your lap. However, it has to be at times when YOU invite them.

### CLAIMING THE HUMAN

If you are sitting down watching TV on the couch, your little dog can jump up next to you on the couch, so long as your dog understands it is your couch, not theirs. You need to make your dog wait until you invite them to climb into your lap. When a dog makes it a habit of jumping up on a human at their own free will, we humans see it as love and affection. However, to a dog it is a claim. The dog is trying to own you. So the next time you notice your dog is adamant about being on you, remember, he is claiming you not loving you. The human needs to claim their own space back and the dog must be told they can only climb on top when the human invites them.

If you feel your dog is jumping on you in an "I own you" way, it is best not to put nor knock the dog on the floor. Rather, use your fingers poking with enough intensity to make the dog react by moving. You need to

(continued on pg. 7)



the greatest child companion and, unfortunately, it has become widely accepted. Similar to the myth that Pit Bulls are all vicious fighting dogs whose jaws lock and they will not let go until their prey is dead. That's just the way some small dogs are. Right? **WRONG!**

One day, I received a package and my two Boxers went over to greet the UPS driver. I called the dogs back and the driver explained he didn't mind saying hello to my dogs. He could tell they were friendly, then added.... "It's those small dogs you have to watch out for."

So why do little dogs tend to act differently than large dogs? They are all the same type of animal, a mammal of the Canidae family, of the order Carnivora: Canis lupus familiaris, which is a domesticated subspecies of the wolf. Commonly referred to as a canine. This type of animal has instincts that need to be fulfilled in order

## SMALL DOG SYNDROME *(continued from pg. 6)*

communicate with your body language until they move off of the person by themselves. Make them move off; do not physically move the dog. When you see the dog settling down into a calm submissive state, (head down low, not making eye contact, ears back, tail relaxed and not tucked in, not rigidly high), then it is ok to invite them on you, if that is what YOU want. However, if the dog once again gets in an "I own you" stance, they need to be moved off again. Making the dog move, not by you moving the dog. The dog needs to be the one physically moving off.

### AGGRESSION

If your 120-pound Rottweiler decided to viciously bark at your housekeeper... you KNOW you have a problem. However, if your tiny little Dachshund does it, you inform the housekeeper to avoid the dog. The little dog may hide under the table barking and growling, is told to be quiet, but the correction is never really followed through on. The houseguest is told to not put their hands under the table. However, if this were a Rottie, the behavior would be addressed. Small dogs are more likely to be allowed to display dominant behaviors that should never be accepted.

### LAP DOGS

Ever see a small dog jump up on its owner's lap and growl at anyone who comes too close? The owner feels the dog is "protecting" them "because they love me," when actually the dog is "claiming THEIR property." Talk about allowing a dog to be alpha. Now imagine a Doberman Pinscher on that same person's lap, snarling if someone comes to close. Picture in your mind going back and forth, Chihuahua on their owner's lap growling... Doberman Pinscher on their owner's lap growling.

Chihuahua, Doberman.... Chihuahua, Doberman... While it may seem less of a big deal for the Chihuahua to display this type of dominant behavior IN A DOG'S MIND there is no difference between a Chihuahua doing this and a Doberman Pinscher or German Shepherd exhibiting this behavior. Yet a large percentage of small dogs are allowed to display this behavior.

### WALKS

If someone were walking a 7-pound Pekingese and they were pulling on the

lead as hard as they could to get near a tree to pee on it, most dog walkers would simply hold the lead and allow the dog to pull way out in front. What's the harm? The dog is not strong enough to knock a person down and you know you have a good grip on the lead, right?

Whereas if a 70-pound Labrador Retriever were pulling you as hard as they could, there is a good chance they may just drag the human across the pavement. Large dogs are more likely to be told to behave on a lead than little dogs. However, even most large dogs do not walk properly on a lead. Most dogs (large and small) take the owners for a walk (in front of the human) when they should be beside or behind them (pack leader goes first). Large dogs are, at the least, mostly taught not to pull. Whereas not only do small dogs walk out in front, they also pull without being corrected. Dogs who act very excitedly when their humans come home are showing signs of a lack of exercise and/or leadership. For a dog, excitement does not indicate happiness. In most cases, it is a sign of an unbalanced state. When you come home after being gone, avoid speaking to your dog in an excited manner. If we see dogs as human, a dog not being excited and happy does not make sense. However, we must remember dogs are canines, not humans.

### SLEEPING ARRANGEMENTS

Bella, the 7-pound Maltipom. "She's very quiet, and refuses to sleep at the end of the bed, she wants her head on the pillow, and her body under the covers right in between us!"

Large and medium size dogs are less likely to be allowed to sleep at the top of the bed next to a person's pillow. There simply is not room for both human and a large dog. If a large dog is allowed on the bed, they will often be told to sleep at the foot of the bed. Small dogs are more likely to be allowed to sleep right on a human's pillow. In the dog world, the pack leader sleeps in the highest (height-wise) most comfortable place. And for those very tiny dogs who cannot jump on the bed themselves, they get to bark and TELL THE HUMAN when to put them on the bed and when to take them back off the bed. In a dog's mind only the pack leader tells others what to do. It is not necessarily a bad thing

to allow your dog to be on your bed, so long as YOU are deciding when they can get on the bed and when they need to get down. Just keep in mind in the dog world, the pack leader sleeps in the most comfortable spot; so do not allow your dog to push you out of your spot. Your dog needs to lie around YOU, not you around THEM.

### THE YAPPY TRAIT

While some dogs have more of a tendency to get yappy, the yappy traits have everything to do with the way they are treated by the owner. For instance, if the dog lacks a pack leader and feels THEY are the pack leader they may become yappy every time you leave them alone. Or become yappy as they try to get YOU to follow THEIR commands.

If you fall into "Small Dog Syndrome" and allow a dog to take over the home, they will tend to be more yappy. Small dogs who see their humans as 100 percent pack leader and are told to hush when they do bark, get daily walks, and are content with themselves are less likely to be little yappers.

### THE NERVOUS TRAIT

When a dog appears scared, nervous, stressed, or otherwise upset in any way, we humans tend to pet them, stroke their coat, and talk to them in a soothing manner. We tell them everything is ok. We do this with large and small dogs, but we tend to do it even more with smaller dogs. We pick up the little dog and cuddle them every time they look upset. We humans feel good about giving comfort. It's human nature and our little dogs are our babies.

This type of reassurance works on humans; it's what humans do and we understand this type of comfort. However, when the canine animal is in an unstable state of mind and is given a human consolation (treated like a human) it intensifies the dog's state (stress, fear, nervousness etc.). In the dog world when a dog is in an unstable state and you try to reassure them by giving affection, the dog sees you as being in a weaker state than their own. The canine species can read human energy. They read sympathy as weak energy. With their primal instinct to have order in their pack, it is very disturbing for a dog in a weak state of mind to be surrounded by other weak pack members. At these times there is no pack leader and chaos is present as no one is providing direction. The

(continued on pg. 8)





same is true in ALL human societies. That is why leaders are elected or allowed to be in place. It intensifies the dog's instability, sometimes to the point where the dog, in their already unstable state, tries to be your pack leader. In the dog's mind you are now weaker than they are, which instinctually puts the dog in a higher alpha position than you. Instinct tells a dog that the stronger member is higher in the pack order. This ensures the pack's survival. You need to give off a stronger, more stable energy that the dog can feed from.

Many little dogs suffer from instability due to their likelihood of being babied and over protected. When large dogs are upset, since we cannot pick them up, they are less likely to be treated in this manner.

#### SEPARATION ANXIETY

Dogs who believe they are the pack leader often develop separation anxiety. Followers are not allowed to leave the pack leader but pack leaders can leave the followers.

#### List of dominant behaviors which can occur in dogs (This list is not complete)

Besides the obvious guarding, growling and biting many dogs display a variety of dominant behaviors that commonly go unrecognized by their humans. Dogs very rarely display the highest level of dominance overnight. There are usually signs leading up to it over the years and dominant alpha dogs do not always growl and bite. If the owners are giving the dog what they want there sometimes is no reason for the dog to growl or bite unless they are challenged. Dogs understand that they exist in a human world. After all, who gives them food and opens the door for them to go potty? When humans perform these tasks on demand from the dog though, why wouldn't the dog think they're the leader? It is easy for dogs to get the impression

## SMALL DOG SYNDROME *(continued from pg. 7)*

they are alpha in their pack. Since many canine alpha behaviors are not acceptable in human society, for example biting being one of the alpha communication tactics, it is important for humans to remain the leaders over their dogs.

Below are some common behaviors dogs display when they believe they are above humans. Keep in mind that a dog does not have to display all of these behaviors to be in a dominant frame of mind. Sometimes an alpha dog will only display a few of the behaviors and at random times, depending on what the dog decides they feel like doing at any given moment. Smarter dogs tend to challenge the pack order more than dogs of average or below average intelligence.

- Stubbornness
- Headstrong and willful
- Demanding
- Pushiness
- Begging
- Pushing a toy into you in order to get you to play with them.
- Nudging to be petted.
- Sitting in high places looking down on everything.
- Guarding a human from others approaching. People like to call it 'protecting' but it's actually 'claiming.' Dog owns you.
- Barking or whining at humans which many owners consider "talking" (without a command to do so).
- Jumping or putting their paws on humans (without a command to do so).
- Not listening to known commands.
- Persistence about going in and out doorways before humans.

- Persistence about walking in front of humans while on a lead.
- Persistence about getting through the doorway first.
- Refusing to walk on a lead. (excluding untrained puppies, dogs with injuries or illnesses).
- Nipping at people's heels when they leave. (Dog did not give permission to leave).
- Dislikes people touching their food.
- Standing proudly on a human lap.
- Persistence about being on top, be it a lap or stepping on your foot.
- Persistence about where they sleep, i.e. on your pillow.
- Annoyance if disturbed while sleeping.
- Likes to sleep on top of their humans.
- Licking (giving kisses) in a determined and focused manner.
- Carrying themselves with a proud gait, head held high.
- Not liking to be left alone and getting overly excited upon the humans return.

#### CONCLUSION

The bottom line is; small dogs are no different than large dogs. What gives them their different temperaments is that humans treat them differently. We over protect them and treat them like babies. Things we do not allow large dogs to do which are common pack leader issues because of the dog's size are addressed. These are issues all dogs need to have addressed, yet the smaller dogs tend to not get this discipline.

If you are unsure how to gain control back from your dog, or if you think you are at risk of being bitten, please hire a professional to help you.

#### INTRODUCING PAPHAVEN RESCUE - [WWW.PAPHAVEN.ORG](http://WWW.PAPHAVEN.ORG)

This group came about through the love of a small deaf puppy that required transport halfway across the country to her new home. It took the effort and dedication of people from Texas to Washington D.C. and on to Ohio. It took the cooperation of three other rescue groups. In the end, it took the hearts of every one. It is this good will and renewed faith in the goodness of people everywhere that led us in forming Papillon Haven Rescue (Pap Haven). We are a 501(c)3 non-profit organization, all volunteer National group specializing in Paps and Papillon mixes, their rescue, and rehabilitation.

Since then, PapHaven Rescue has grown dramatically and continues to grow and evolve to try to meet the changing needs of rescue and the on-going saga of Papillons in need... where ever they are.

We would like to invite you to join in our rescue efforts. With hands reaching out across the country, we can form a circle of love and caring that refuses to let even one Papillon in need fall though the cracks. We are not in competition with any other rescue groups. In fact, it is our goal to work hand in hand with every rescue group and shelter that will join us in this effort. We will not ask for perfect lineage, origins, or looks. We will coordinate with other groups for transporting each other's breed. We welcome volunteers, sponsors, interested folk, contributors, and especially kind words.

Our eNewsletter, *The Way Home*, will try to bring informative articles, announcements, feature stories, up-coming events, and urgent alerts about situations where the need for rescue is great.



# HELP PHR WIN \$10,000

Bissell Inc. (the vacuum cleaner company) is running another contest! You can vote every Thursday!

## THE 1ST PLACE WINNER RECEIVES

- their pet's picture on the Bissell box
- a Bissell vacuum or Deep Cleaner designed for pets
- \$10,000 donation to the charity of their choice (\$5,000 for 2nd; \$1,000 for 3rd)
- \$500 "Perfect for You & Your Pet" shopping spree (\$250 for 2nd; \$50 for 3rd)

We have been notified that Kristen Goering (a PHR Member from Des Moines, Iowa) entered her PapHaven Pooch, Tag (shown below)! You may remember Tag was fostered by Nancy Sundberg in Minnesota.





# MVP Most Valuable Pet Photo Contest

ENTER VOTE DETAILS 2010 WINNERS



## TAG

**Pet Parent:** Kristen Goering  
**Entrant #:** 0105728  
(Just search for Tag")

Tag is a 4 year-old Papillon that was rescued from a puppy mill in Missouri by Papillon Haven Rescue. Tag now spends his days in comfort with his little brother Toby and his foster brother Gus; learning agility and getting all the love and snuggles he so very much deserves.

[http://mvp.bissell.com/mvp\\_PetDetail.aspx?id=8589943603](http://mvp.bissell.com/mvp_PetDetail.aspx?id=8589943603)

Voting for period one begins on Jan. 8 thru Jan. 14. If Tag is chosen as one of the top five vote-getters in the first period running, he will be entered into the semi-finals. If not, Kristen will submit his name and photo into each subsequent round. Final voting will take place during March 26, thru April 1.

Each person is allowed one vote per round – so PLEASE cross-post this to all of your friends and family! Let help Tag (and PHR) WIN!!!



↑ [CLICK HERE TO GO TO THE VOTING PAGE!](#)

MEMBERS' HELP NEEDED:

## LET'S START COOKING!

**P**apHaven Rescue is about to begin a new fundraising project! We are asking for everyone's participation. It shouldn't take very long at all, just a few minutes of your time.

Could you go through your family's favorite recipes and share a few with us? Are you a Home Cook for your paps? If so, what is their favorite recipe? Do you have a tried-and-true homeopathic remedy (that you are willing to share) that you use with your Paps? In turn, we will turn everyone's favorite recipes into a marvelous cookbook/helpful hints guide.

Just think about it ... you know you were reading something in the chat group about a remedy for diarrhea. And just before Christmas a member asked for a good recipe for Pecan Pie. But did you save those responses – or can you even find them? This could be the answer to all of our dilemmas.

What do you think we should call it? "There's a Hair in My Soup!" pops into my mind! What about you? This is yet another aspect of this project that we need to fill in.

As all of you get started gathering your recipes, tried-and-true remedies, and helpful tidbits, we will make the final decisions about who will be handling this project and let you know! Let's make this one of our best fundraisers ever! Thanks ...

## HELP WANTED!

### WHAT DO YOU FEED YOUR DOG?

If the answer is *Natural Balance*, then we need your help!

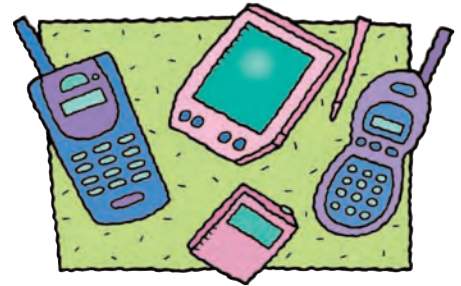
Van Patten's Natural Balance Pet Foods has offered to make a donation to a rescue group if they can save 50 bar code / purchase receipts from their foods (specific flavors don't matter). They do require 50 bar codes before they accept a submission.

If you can help, please send your bar codes and receipts to **Stephanie Sherwin** – she will collect and then mail in the necessary paperwork when we have enough for submission. This is a continuous program – so please save them!

**Please send to:** 4 Woodsong, Roland, AR 72135



## TIME TO CLEAN OUT & HELP



**P**apHaven Rescue is hosting an online gadget drive through Gazelle to raise money for the Papillons we love and serve; and would love your support. A gadget drive is a new way to fundraise that turns your used and unwanted electronics (laptops, cell phones, MP3 players, digital cameras, & more) into cash to support our cause. Contributing to this drive is simple. Just visit the webpage, find the value of the gadgets you would like to donate, and send them to Gazelle (shipping is free). The value will go to support PapHaven.

If you would like to donate, please check out the drive's page (<http://paphaven.gazelle.com/>) to learn more and track our progress. You will receive a confirmation of your donation by email, and PHR will be notified as soon as you make your donation.

Thank you for your support,  
PHR's Fundraising Team

To learn more about Gazelle, visit [gazelle.com](http://gazelle.com).



## PAP-OF-THE-MONTH: NEO & SANDRA

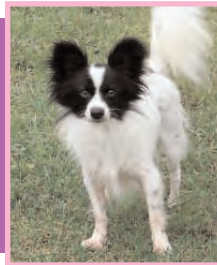
**H**i, my name is **Neo** and I am 10lbs and about 12.5" tall. I'm a happy sweet boy who's looking for a good home. I'm very well-behaved. I love to curl up next to you while we're watching TV. My foster mom says I shouldn't jump on her knees from behind when she's

me but she can't keep me, so I'm looking for a special home with lots of love for a little guy like me.

**H**ello my name is **Sandra**. I am 12lbs and 12" tall and have beautiful black and white markings. My life was once

going to the kitchen to feed me, but I just get so excited when it's dinner time! I just love to eat, don't you? When my foster mom leaves to go shopping, I'm very good – no chewing or tearing things up, and when she gets home, I'm so glad to see her, I can hardly contain myself! I'm learning about housetraining and doing really well. I love to go for walks but I get excited about that too, and sometimes I pull on the leash. When it's time to go to bed, my foster mom says, let's go to bed, Neo, and I jump down and go into the utility room where I sleep on my bed. She gives me a nice treat before bed and I go right to sleep. I like to play with other dogs, too, and my foster siblings and I have lots of fun. I haven't had a lot of toys, so I really don't understand about them, but they look interesting sometimes. My foster mom says I'm beautiful now, and I'll be someone's beautiful little butterfly someday soon when all my fur grows back. I scratched it all off when I was living outside covered with fleas. I know she loves

spent having babies. That's it... sitting in a cage year after year next to my life long friend Jeana. But now I'm in my foster home luvin' life. I was very nervous in the beginning, everything is so strange and so wonderful at the same time. It's only been a month in my new life, so new faces still make me a little shy, but I can't resist the attention. I feel so happy now. I love to walk and frolic and explore. I like cats, other dogs, and even chickens are OK. I am just starting to learn to play with toys and despite hardly having any teeth, I love to spend my evenings watching TV and chewing on a good rawhide. Man, this is the life. I am very calm and quiet, in fact I never say a word (except when I am dreaming.) There are so many things to be thankful for so far. A soft bed, a kind hand, and gentle words are changing my life. The only thing missing now is a forever family to call my own. Let's live "happily ever after" together.





## COINS CAN CAUSE CHANGE (C<sup>4</sup>)

In a perfect world, money for animal rescue would be limitless! As we all know, that is never the case ... especially with the economy as it is today. But here is a question for you to ponder ... could you survive without the pocket change in your wallet for one day? How about for one week? And what would I have to do to talk you into sending me that money?



I don't know about anyone else, but I stash all of my pocket change daily. When my container is full, this affords me one luxury item – this year that luxury was Mingle! And it was worth EVERY penny!

Could you stash your change for one week and give it to PapHaven? That is the idea behind C<sup>4</sup>. If we all stashed a week's worth of pocket change, how much would each of us have to donate to PHR? Maybe \$3; possibly \$7.50 ... but think about it, if every member and every e-news subscriber donated \$5 worth of pocket change we could have almost \$6,000!

Please understand ... *there is never a donation that is too small!* And every single penny is appreciated by every foster we have. While they really don't grasp the meaning of your generosity, they do appreciate the love, care, and attention that is lavished on them by their foster parent and then their forever family. And it's your generosity that makes everything their foster parents do possible.

Think about it ... and if you could put a container on the counter and collect a week's worth of pocket change, we would gratefully appreciate your help (more than you know.)

## WHAT SIZE IS MY BABY?

Handy info when buying clothing or accessories for your dog.

### HOW TO MEASURE PROPERLY

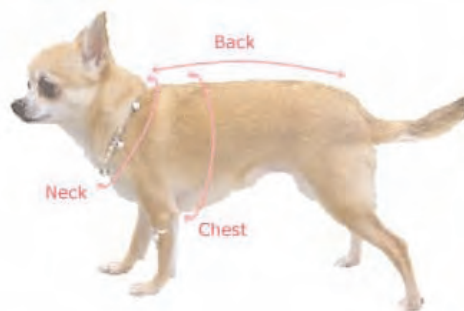
When shopping for apparel and accessories for your pup, there are three important measurements that you will need to keep handy:

#### (1) BACK (TOP LINE)

The first size you need to know is what is referred to as the back length, a/k/a top line measurement. This size is obtained simply by measuring along your dog's backbone – from the base of where their collar rests to where their tail rests. Every designer is different, so you may also need to consider your dog's girth (chest) measurement and not rely solely on the top line measurement.

#### (2) NECK

The second size you will need to be very familiar with is your dog's neck size. To determine this size, measure around your dog's neck with a tape measure. Obtain the



exact size of their neck and then add just enough room that you think will be necessary for their comfort.

#### (3) CHEST

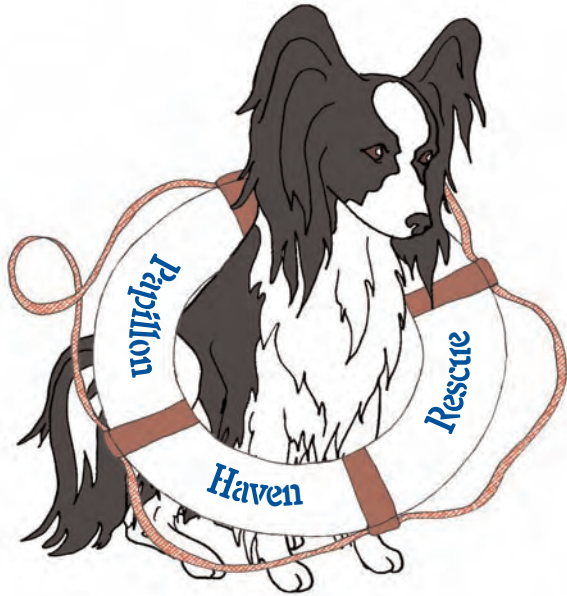
The third size you will need to know is your dog's chest measurement, sometimes also called the girth size. To accurately determine this size, measure your dog's chest at their widest point; this is typically just behind their front legs. If your doggie has a larger girth (perhaps from enjoying too many treats!), you may want to choose one size larger in their top line measurement, so the garment will not be too snug around their belly. In addition, this size (chest) usually corresponds to what your dog's harness size will be.



SIZE	XXS	XS	S	M	L	XL
Neck	6"	8"	9"	11"	12"	14"
Girth	10"	12"	14"	16"	19"	22"
Length	7"	8"	9"	11"	13"	16"







# Local Foster Families Needed

Established in 2003, PHR has placed many Papillons into their forever homes. Many have been owner surrenders, shelter surrender as well as stray rescues. Our members pride themselves in finding the best possible homes for our Papillons.

## **But it's impossible to do without foster homes!**

All of our rescued Paps go through a screening process, are altered, and fully vetted prior to placement. We are a national group of volunteers spanning the US who do this just because we love the breed and are trying to protect and preserve it! During their time with us in foster care, we work on crate training, socialization, basic obedience, and housetraining, so that the transition period is smoother once placed into their forever homes.

If you are interested in:

## **Adopting / Fostering / Volunteering**

Please contact PHR at (501) 865-4442

**Local:** (\_\_\_\_) \_\_\_\_\_

**Email:** [jorolan@catc.net](mailto:jorolan@catc.net) or [dogmom5@twcny.rr.com](mailto:dogmom5@twcny.rr.com)

**Website:** [www.paphaven.org](http://www.paphaven.org)

*"Dogs come into our lives to teach us about love ...  
they depart to teach us about loss.  
A new dog never replaces an old dog, it merely expands the heart.  
If you have loved many dogs, your heart is very big."* Erica Jong

